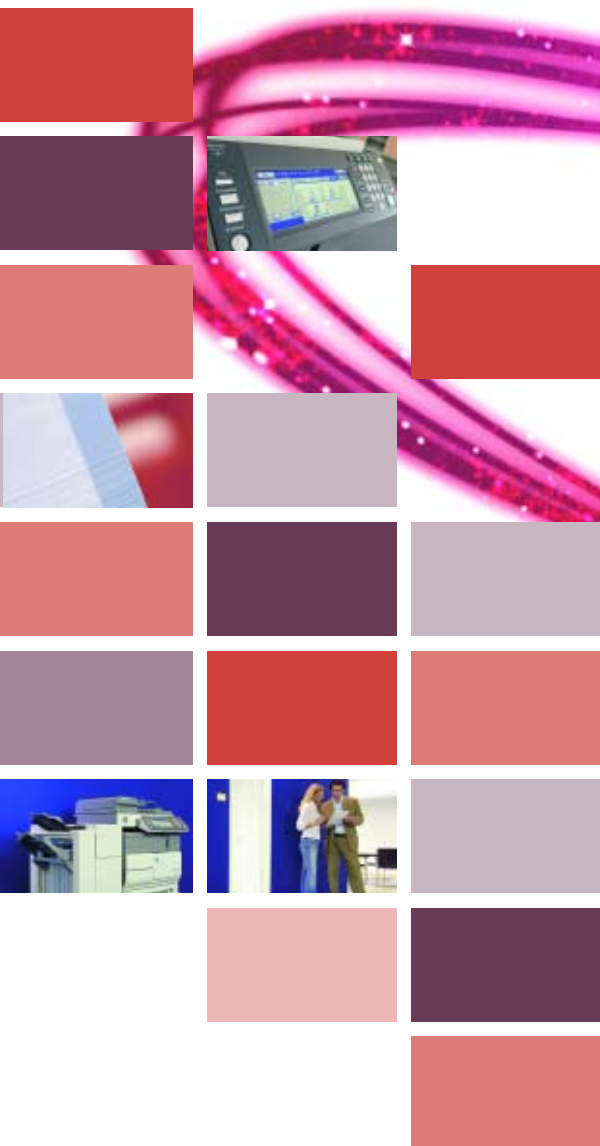




KONICA MINOLTA

www.konicaminolta.co.uk

Office system bizhub 500



# **bizhub 500**

Multi-tasking  
Communication Centre

The essentials of imaging



# Professional productivity packed with a punch

The talented bizhub 500 is the walk-up, multi-tasking network communication centre for large departments, splendidly clearing away the many individual machines dotted around the office. It incorporates a sophisticated and easy-to-operate control system, including the possibility to reprioritise print jobs, and it just keeps on efficiently running.

With an accomplished print throughput of up to 50 pages per minute and many copy, scanner and optional fax functions, including simultaneous operation, the bizhub 500 is precisely what a super active department needs for everyday black and white production and communication.

Whatever the diverse demands of the active office, the bizhub 500 makes light of them all.

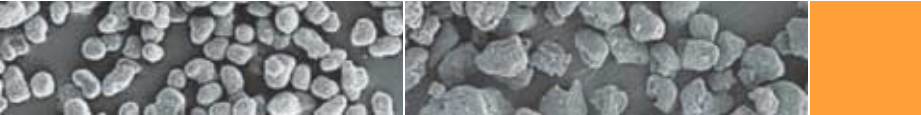
For instance, the machine can switch immediately from a high-volume print or copy run to a quick scan-to-eMail message, to the printing of individual documents, to the production of a booklet and simultaneous faxing of an invoice, receiving a fax, saving a regularly used document for future use or distributing a circular to staff.

The bizhub 500 can be easily enhanced to incorporate full User Box functionality including broad-based archiving and is backed up with a watertight security system which complies with international standards.

The bizhub 500 is action-packed and very accomplished to meet today's modern office communication demands.

## **bizhub 500**





Simitri™ polymerised toner

Conventional toner



**➔ Perfect printing – fast and dependable**

The comprehensive Emperon™ controller, which supports PCL5e/6 and PS3 achieves a resolution of up to 2,400 x 600 dpi, operates with common platforms such as Windows and Mac and gives that extra zing to workflow control and quality. Thanks to Simitri™, Konica Minolta's innovative extra fine polymerised toner, high quality imaging is assured.

The Print Status Notifier (available Autumn 2006), is a bi-directional communication tool, providing a complete monitoring service for each user. In the event of a printing delay or an interruption, the user is immediately informed with a pop-up message on their PC screen thus saving them an unnecessary trip to the machine.

\* Optional functionality  
 \*\* Requires optional HDD

# Primed for printing **comprehensively**



Whatever the printing needs of the modern, vibrant department – e.g. letters, mid to high-volume print runs, invoices, reports, manuals, mailings – the bizhub 500 smoothly, effectively and speedily delivers them all.

- The optional large paper capacity of up to 5,650 sheets will support large print runs effortlessly. The bizhub 500 can also accommodate media from A6 to A3 and thickness from 50g/m<sup>2</sup> to 210g/m<sup>2</sup> via the bypass tray.
- The finishing options are designed both to enhance the image of a document and save valuable time and they include 50-sheet multi-position stapling, 4-hole punching, booklet production and mail-bin sorting.



corner stapling



2-point stapling



booklet



four-hole punching



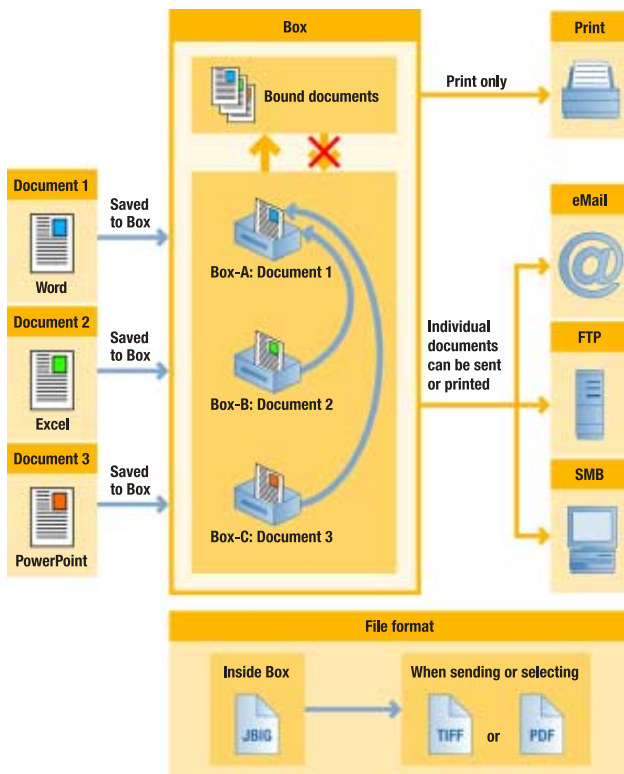
sheet insertion



offset sorting

# Supreme document access

# integration



Box functionality: data flow – document storage and distribution

The successful office communication environment requires an all-embracing archiving and dissemination approach. Konica Minolta's Box functionality, available with the installation of the optional 40GB hard disc drive, does just that. An enormous quantity of documents can be stored in up to 1,000 user boxes as required. Documents can thus be retrieved, recombined, reprinted or distributed at will. In addition, Personal User Boxes can only be used by specified individuals and are protected by a box password.

## ➔ Rapid scanning processed effortlessly

Rapid scanning at up to 70 originals per minute via the standard document feeder combined with immediate storage and electronic distribution of documents is just what the department needs. Thanks to the embedded network card, features like scan-to-eMail, SMB and FTP are included as standard.





# Effective, efficient, total management

## → Keep on running

The highly dependable robust bizhub 500 has everything to ensure smooth, durable, long-lasting operation. Long-life consumables, a massive paper input and output capacity and extended duty cycles all play their role. In addition, remote service capabilities are available to make a further valuable contribution to maximising up-times and to maintaining reliability.



## → Safe, secure control

Konica Minolta provides perfect protection for the shared environment including compliance with the latest international security standard ISO 15408 EAL3\*.

In addition, the Secure Print function allows users to give each print job a password which must then be entered at the machine before printing takes place. The optional hard disc can also be protected with a password and optionally further protected with an encryption tool so that unauthorised reading of the data is impossible, even if the hard disc is removed.

For effective cost control the bizhub 500 offers the straightforward use of up to 1,000 accounts, all with allocation and monitoring functions.

\*from Autumn 2006

## → PageScope Suite – for top management

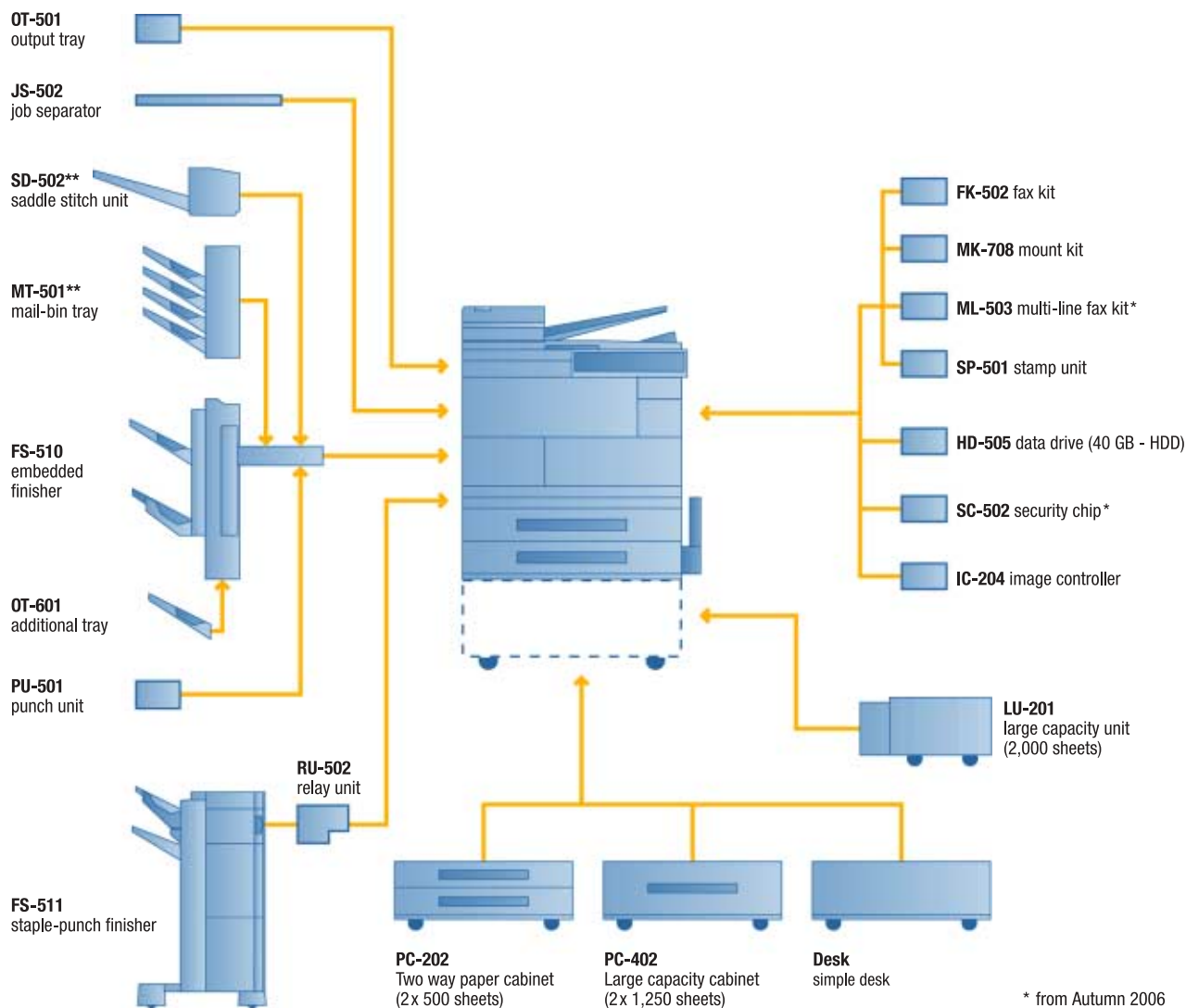
The large range of Konica Minolta's unique software utilities covers the whole bizhub 500 operation. For instance, PageScope NetCare and Network Setup facilitate the easy management of the machine on the network. In addition, PageScope Workware enables effortless merging, converting, forwarding and scanning of documents.

Enjoy a lasting partnership with the talented bizhub 500 and reap the benefits: synergy, effective creativity, communication and a contented office environment!



Your options

# at a glance



\* from Autumn 2006  
\*\* either SD-502 or MT-501  
can be installed into FS-510  
at one time



KONICA MINOLTA

Simitri



## Technical specifications

### Copier specifications

**Copying process**

Electrophotographic laser

**Toner system**

Polymerised toner

**Copy/print speed A4**

50 cpm/ppm

**Copy/print speed A3**

27 cpm/ppm

**1st Copy/print time**

3.2 sec. (A4)

**Warm-up time**

Approx. 60 sec.

**Copy resolution**

Equivalent to 1,200 x 600 dpi

**Gradation**

Equivalent to 256 gradations

**Multicopy**

1-999, countdown, interruption mode

**Original format**

A5-A3

**Magnification**

25-400% in 0.1% steps

**Copy features**

Image rotation, image repeat, booklet creation, combination N-in-1, stamp

### Printer specifications (optional)

**Print resolution**

Equivalent to 2,400 x 600 dpi

**Controller CPU**

MPC 8245, 400 MHz

**Page description language**

PCL5e/6

PostScript 3

**Operating systems**

Windows 98/ME/NT4.0/2000/XP/

Server 2003

Macintosh 9.0 or later/OS X 10.2, 10.3, 10.4

### Scanner specifications

**Scan speed**

Up to 70 OPM (300 dpi via DF)

Up to 50 OPM (600 dpi via DF)

**Scan resolution**

Max.: 600 x 600 dpi

**Scan modes**

Network TWAIN scan\*

Scan-to-eMail

Scan-to-FTP

Scan-to-SMB

Scan-to-Box/HDD\*

(\*with optional hard disc)

**File formats**

TIFF, PDF

**Scan destinations**

LDAP support

### Fax specifications (optional)

**Fax standard**

Super G3

**Fax resolution**

Max.: 600 x 600 dpi (ultra-fine)

**Fax compression**

MH, MR, MMR, JBIG

**Fax modem**

Up to 33.6 Kbps

**Fax back-up memory**

32 MB

**Fax destinations**

1,000 (2,000 with optional hard disc)

**Fax functions**

Polling, memory transmission/reception, broadcasting, PC fax, multi-line fax\*\*

### System specifications

**System memory**

576 MB

**System hard disc (optional)**

40 GB

**Interfaces**

10-Base-T/100-Base-TX Ethernet,

Parallel IEEE 1284

USB 2.0

### Automatic document feeder (standard)

Up to 80 originals

**Paper size**

A5-A3

**Paper weight**

60-105 g/m<sup>2</sup> (from trays)

50-210 g/m<sup>2</sup> (from bypass)

**Paper input capacity**

Standard: 1,150 sheets

Max.: 5,650 sheets

**Paper output capacity (optional)**

Up to 3,250 sheets

**Automatic duplexing (standard)**

A5-A3

60-105 g/m<sup>2</sup>

**Finishing modes (optional)**

Offset, group, sort, staple, punch, centre-fold, booklet, mailbin sort

**Copy/print volume (monthly)**

Recommended: 25,000

Max.: 175,000

**Power consumption**

Less than 1,560 Watt (system)

**System dimensions (W x D x H mm)**

677 x 708 x 895

**System weight**

Approx. 91.2 kg (with DF)

### System features

**Security**

ISO 15408 EAL3\*\*

**Accounting**

Up to 100 user accounts (1,000 with optional hard disc)

Active Directory support

(user name + password)

User function access definition

**Software**

PageScope NetCare

PageScope NetworkSetup

PageScope Data Administrator

PageScope Box Operator

PageScope Workware

PageScope ScanDirect/Pro

\* optional functionality

\*\* from Autumn 2006

All specifications relating to paper capacity refer to A4-size paper of 80 g/m<sup>2</sup> quality.

All specifications relating to scanning, copying or printing speeds refer to A4-size paper that is scanned, copied or printed crosswise in multipage, simplex mode.

The memory capacities listed refer to A4-size paper.

Some of the product illustrations contain optional accessories.

Konica Minolta does not warrant that any prices or specifications mentioned will be error-free.

Specifications are subject to change without notice.

Microsoft, Windows and the Windows logo are trademarks, or registered trademarks, of Microsoft Corporation in the United States and/or other countries.

All other brand and product names may be registered trademarks or trademarks of their respective holders and are hereby acknowledged.



Printed in the UK on Revive Silk, a paper containing a minimum of 75% post consumer de-inked recycled waste, using soya based mineral-oil free inks.

Your Konica Minolta Business Solutions Partner: