

## HP LaserJet 1100 Printer

## HP LaserJet 1100A Printer • Copier • Scanner



### HP LaserJet efficiency at your desk

The personal HP LaserJet 1100 Printer and the HP LaserJet 1100A Printer•Copier•Scanner provide you with high-performance print functions for all your office printing needs. For even more efficiency, the HP LaserJet 1100A Printer • Copier • Scanner integrates copy and scan functions for state-of-the-art management and communication of business documents.

### HP LaserJet 1100 Printer

- Quickly print professional looking documents at 8 pages per minute with true 600 dpi, HP Resolution Enhancement technology (REt) and the HP UltraPrecise toner cartridge
- Print the business documents you need with 2 MB standard memory (can be increased to 18 MB for complex print jobs)
- Alternative paper paths for a wide variety of print media
- Work with standard operating systems such as Windows® 3.1x, Windows® 95/98, Windows® NT 4.0, DOS
- Superior HP LaserJet quality and reliability

### HP LaserJet 1100A Printer • Copier • Scanner

All the features of the HP LaserJet 1100 **plus** more efficiency at your desktop with advanced functions

- Copy documents at the push of a button
- Scan documents for your business applications: file, retrieve, OCR, attach to e-mail, etc.
- HP desktop software for efficient document management
- All features are designed to work perfectly together and run under standard PC operating systems

# 1100/1100A

# *Your fast personal printer:* **HP LaserJet 1100 Printer**

## **Quickly print all the high-quality business documents you need**

- Fast print output at 8 pages per minute
- High-quality results for high-impact documents with true 600 dpi, HP Resolution Enhancement technology (REt) and the HP UltraPrecise toner cartridge
- First page out in 18 seconds

## **Easy to set up and use, and extremely reliable**

- Print the business documents you need with 2 MB standard memory
- Work with all leading operating systems such as Windows® 3.1x, Windows® 95/98, Windows® NT 4.0 and DOS
- Alternative paper paths for a wide variety of print media
- Superior HP LaserJet product quality and reliability

## **Additional functions for efficient document management**

- Optional copier/scanner attachment to increase the range of desktop tools available
- Handle complex print jobs with greater efficiency by increasing printer memory to up to 18 MB
- Connect to a network with an HP JetDirect external print server



For more efficiency at your desktop, the HP LaserJet 1100A Printer • Copier • Scanner combines all the features of the HP LaserJet 1100 Printer with additional copy and scan functions to optimise the management and communication of your business documents



**Print high-quality documents fast**

# Your fast personal document manager: HP LaserJet 1100A

## Printer • Copier • Scanner



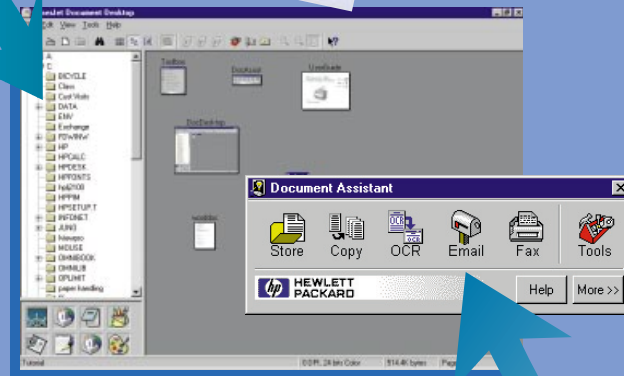
### • Copy direct

Make fast, high-quality copies at the push of a button, even with your PC switched off. For more advanced features such as multiple copies, image enhancement or contrast adjustment, use the software provided for your PC.



### • File and retrieve

The easy-to-use HP LaserJet 1100A desktop software includes an efficient filing system. The LaserJet document desktop allows users to drag "thumbnail" icons of scanned images and drop them into file folders as electronic documents. These documents can be opened, viewed, annotated or sent electronically right from the desktop.



The Document Assistant\* gives users quick and easy access to the document management and communications functions of the HP LaserJet 1100A. This software feature allows users to send a scanned image directly to the appropriate application for the task they wish to perform by just clicking on the icon.

\* Under Windows 3.1x all functions are available via the desktop software, not via the Document Assistant

### • No need for re-typing

The HP LaserJet 1100A includes the highly efficient ReadIRIS® OCR (optical character recognition) software for converting hardcopy documents to editable text. A document scanned to text via OCR is automatically sent to the word processor application on your PC for editing.

### • Distribute documents by e-mail or PC fax

For efficient business communications with workgroups or customers, the HP LaserJet 1100A allows users to convert hardcopy documents into electronic format for easy distribution via e-mail or PC fax applications. The necessary links to users' existing e-mail and PC fax applications are made automatically during software installation.



Print high-quality documents fast



Make copies in various formats at the push of a button



Create and edit documents quickly with highly efficient ReadIRIS® Optical Character Recognition (OCR) software



File and retrieve business documents at any time with the easy-to-use desktop software



Distribute documents by e-mail or PC fax

## Technical Specifications

### Printing (HP LaserJet 1100, HP LaserJet 1100A)

<b>Print Speed and Processor</b>	8 ppm-rated engine speed; first page out in 18 seconds; instant-on fusing eliminates warm-up time. Microprocessor: Motorola ColdFire 5202, 35 MHz
<b>Resolution</b>	600 x 600 dpi plus HP's Resolution Enhancement technology (REt) and HP UltraPrecise Toner Cartridge
<b>Printer Language</b>	HP PCL 5e
<b>Fonts</b>	26 Intellifont scalable fonts built in; additional fonts and font management provided with HP FontSmart for Windows®
<b>Media Types</b>	Plain paper, envelopes, transparencies, card stock, postcards and labels
<b>Media Weights</b>	60 to 105 g/m <sup>2</sup> (16 to 28 lb) using paper output bin; 60 to 163 g/m <sup>2</sup> (16 to 43 lb) using front output slot
<b>Media Size</b>	A4: 210 x 297 mm, Letter: 216 x 279 mm, Legal: 216 x 356 mm, and custom paper sizes Executive: 184 x 267 mm, B5: 176 x 250 mm, C5: 229 x 162 mm, DL: 220 x 110 mm, Monarch: 98 x 190 mm, Com-10: 105 x 241 mm and custom envelope sizes
<b>Media Handling</b>	One 125-sheet paper input bin and single-sheet priority feed slot. One 100-sheet paper output bin and alternate straight-through path for wrinkle-free envelope printing
<b>Printer Control Panel</b>	Simplified front panel with one operator button/LED plus two LEDs for status
<b>Memory</b>	2 MB standard plus HP's Memory Enhancement technology (MEt). 1 DIMM slot., expandable to 18 MB with 100 pin EDO DIMM (Dual-In-Line Memory Module)
<b>Interface</b>	IEEE-1284 ECP compliant parallel port using 36 pin high-density female connector (C-type); 2 m IEEE-1284 compliant parallel cable included with printer
<b>Software</b>	Includes the printing system (with printer drivers for Windows® 3.1x, 9x, NT 4.0), HP FontSmart for Windows® 2.5 font manager, On-line User Guide and DOS printer utilities (printing from DOS, OS/2, Unix, or other environments possible in compatibility mode). Minimum of 3 MB of free hard disk space required for printing from Windows®
<b>Toner</b>	HP UltraPrecise toner cartridge; average 2,500 pages (4,340 pages EMCA-132/ISO 10561) at 5% coverage. Economode printing uses up to 50% less toner
<b>Estimated Usage</b>	Up to 7,000 pages per month (Duty Cycle)

### Copying & Scanning (HP LaserJet 1100A only)

<b>Copy Speed</b>	Up to 8 ppm
<b>Scanner Resolution</b>	600 dpi enhanced (300 dpi optical) with 256 levels of grey; Text Mode, Photo Mode and Combination Mode for optimal results
<b>Scanner Control Panel</b>	Simple 2 button panel, one button for copying and one button for scanning to the PC
<b>Scanner Compatibility</b>	Twain 1.6
<b>Scan Media</b>	<b>Size:</b> 51 x 89 mm (2 x 3.5 in) to 216 x 762 mm (8.5 x 30 in) <b>Weight:</b> 60 to 163 g/m <sup>2</sup> (16 to 43 lb) <b>Capacity of input bin:</b> 20 sheets
<b>Software</b>	Includes printing and scanning software for Windows® environments, integrated desktop for organizing scanned documents, drag-and-drop links to key applications, self-viewing portable document creation, easy access to device configurations, and scan to copy functions, ReadIRIS® professional OCR software
<b>Minimum System Requirements</b>	Windows® 3.1x requires 486 with 4 MB RAM and 25 MB of free hard disk space Windows® 9x requires 486 with 16 MB RAM and 54 MB of free disk space Windows® NT 4.0 requires Pentium 90 with 32 MB RAM and 54 MB of free disk space CD-ROM required. ECP parallel port recommended

### Other Specifications

<b>Weight</b>	<b>HP LJ 1100:</b> 7.3 kg (16.1 lb); <b>HP LJ 1100A:</b> 8.7 kg (19.2 lb)
<b>Dimensions</b>	<b>HP LJ 1100:</b> W x D x H 367 x 325 x 378 mm (14.5 x 12.8 x 14.9 in) with paper supports <b>HP LJ 1100A:</b> W x D x H 367 x 402 x 378 mm (14.5 x 15.8 x 14.9 in) with paper supports
<b>Power Requirements</b>	220-240V AC, 50/60Hz (110-127V AC, 50/60Hz)
<b>Power Consumption</b>	0 W Off, 7 W Ready/PowerSave mode; 170 W printing, 185 W copying
<b>Product Certifications</b>	TÜV-GS Licensed, complies with IEC 825-1/EN60825-1 and IEC 950/EN60950; CISPR-22 Class B and carries the CE Marking. Energy Star compliant 110-127V: UL/cUL listed, MNOM-NYCE Certified. Complies with IEC 825-1/EN60825-1 and IEC 950/EN60950; CISPR-22 / FCC Class B. Energy Star compliant
<b>Operating and Environmental Range</b>	Acoustics (ISO 9296). Printing: 55 dBA operator position, 47 dBA bystander, 6.1 Bels (L <sub>wad</sub> ) sound power level. Quick copy: 61 dBA operator position, 53 dBA bystander, 6.5 Bels (L <sub>wad</sub> ) sound power level Operating Temperature: 10 to 32.5° C (50 to 90.5° F) Relative Operating Humidity: 20% to 80% (no condensation)
<b>Warranty</b>	1 year

### For More Information: <http://www.hp.com>

For more information, please call your local HP sales office or representative: **Austria:** (1) 25000-536, **Belgium and Luxembourg:** (02) 778 34 00, **CIS:** (095) 928 6885, **Croatia (Hermes Plus):** 541-525 931, **Czech Republic:** (00 420) 261307111 (Prague), **Denmark:** 45 99 1125, **East Central Europe (Vienna HQ plus Albania, Bulgaria and Romania):** (+43) 1-250 000, **Finland:** (09) 88 721, **France:** (1) 69 82 6060, **Germany:** 0180 532 6222 (0.48 DM per minute), **Greece:** (01) 689 64 11, **Hungary:** (1) 343-0310, **Iceland:** (91) 67 10 00, **Ireland:** (01) 284 46 33, **Italy:** (02) 92121, **Netherlands:** (020) 547 6666, **Norway:** 22 73 56 00, **Poland:** (22) 608 77 00, **Portugal:** (1) 482 8500, **Slovenia (Hermes Plus):** 661 159 3322, **Spain:** (1) 631 16 00, **Sweden:** (08) 444 20 00, **Switzerland:** 084 880 1111, **Turkey:** (0212) 224 59 25, **UK:** (0990) 474747, **International Sales Branch (ISB) for Middle East and Africa (Geneva):** (22) 780 41 11, **European Headquarters (Geneva):** (22) 780 81 11.

### Ordering Information:

Number	Description
<b>Standard Unit</b>	
<b>C4224A</b>	HP LaserJet 1100 Printer (Includes printer, toner cartridge, 2 m parallel cable, power cord, quick reference guide, user guide, CD-ROM, 3.5" disks with Windows® 3.1x, 9x Drivers and DOS utilities)
<b>C4218A</b>	HP LaserJet 1100A Printer • Copier • Scanner (Includes printer, copier/scanner attachment, toner cartridge, 2 m parallel cable, power cord, quick reference guide, CD-ROM)
<b>Supplies/Accessories</b>	
<b>C4092A</b>	HP UltraPrecise Toner Cartridge
<b>C4221A</b>	Copier/Scanner for the HP LaserJet 1100 Printer
<b>C4135/6/7A</b>	4/6/8 MB DIMM Modules
<b>Cable/Network Interfaces</b>	
<b>C2946A</b>	3 m HP LaserJet parallel cable, IEEE 1284-compliant; DB-25 to small 36-pin high-density male (C type)
<b>C2947A</b>	10 m HP LaserJet parallel cable, IEEE 1284-compliant; DB-25 to small 36-pin high-density male (C type)
<b>J3258A</b>	HP JetDirect 170X external print server, single port, 10Base-T
<b>J3263A</b>	HP JetDirect 300X external print server, single port, 10/100Base-TX
<b>J3265A</b>	HP JetDirect 500X external print server, three ports – 10/100Base-TX

HP has custom-designed the HP LaserJet 1100 Printer and the HP LaserJet 1100A Printer • Copier • Scanner and their supplies to work together to optimise print quality



Windows is a U.S. trademark of Microsoft Corp. All other brand and product names are trademarks or registered trademarks of their respective companies.

The information in this document is subject to change without notice.

The Energy Star emblem does not represent EPA endorsement of any product or service